

TRIESTE AT BOCA

A REPLAT OF THE REPLAT OF BLOCK 22 LESS LOTS 17-19-21-23, AND ALL OF
 BLOCKS 23 AND 24, OF DELRAY MANORS IN SECTION 5, TOWNSHIP 47 SOUTH,
 RANGE 43 EAST, IN THE CITY OF BOCA RATON, PALM BEACH COUNTY, FLORIDA

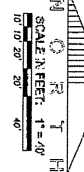
LINE TABLE			LINE TABLE		
LINE	BEARING	LENGTH	LINE	BEARING	LENGTH
L1	N 89°37'06" E	7.78'	L11	N 01°02'04" W	14.00'
L2	N 30°11'34" W	10.26'	L12	N 88°57'56" E	13.00'
L3	N 28°07'28" E	10.26'	L13	S 01°02'04" E	14.00'
L4	N 01°02'04" W	7.78'	L14	N 88°57'56" E	17.74'
L5	S 38°57'06" W	7.78'	L15	N 88°57'56" E	14.01'
L6	S 30°11'34" E	10.26'	L16	N 88°57'56" E	18.01'
L7	S 30°11'34" E	7.78'	L17	N 88°57'56" E	15.88'
L8	S 30°11'34" E	10.26'	L18	S 88°57'56" W	12.00'
L9	S 38°57'06" W	7.78'	L19	S 88°57'56" W	18.00'
L10	S 30°11'34" E	10.26'			

STATE OF FLORIDA)
 COUNTY OF PALM BEACH)

THIS PLAT WAS FILED FOR RECORD AT
 THE OFFICE OF THE CLERK OF THE
 SAID RECORDS IN PLAT NUMBER
 ON PAGE(S)

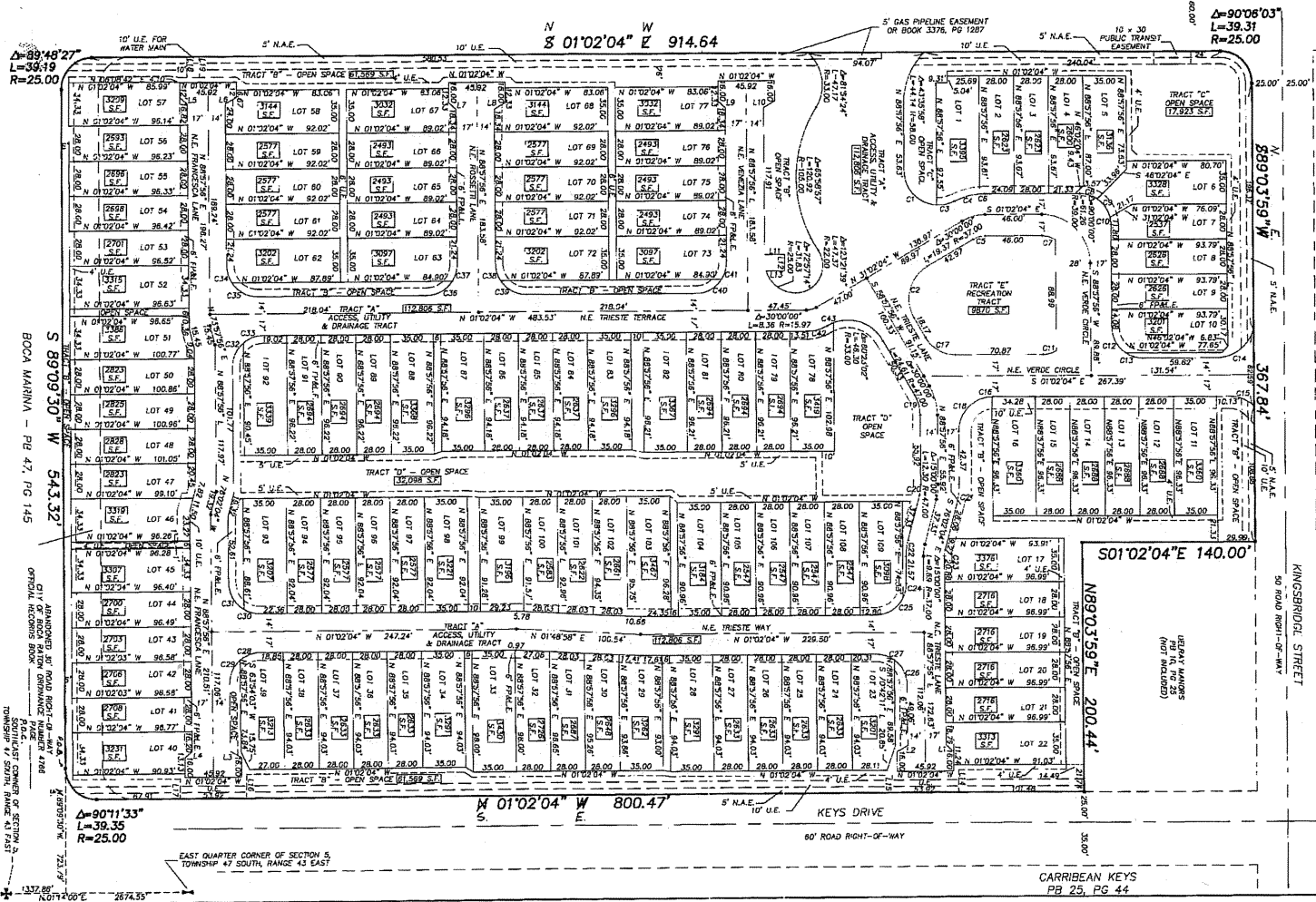
WITNESSED MY HAND AND
 SEAL OF THE CLERK OF COURT

BY: _____
 DEPUTY CLERK



U.S. HIGHWAY 1 (STATE ROAD No. 5) FEDERAL HIGHWAY

120' ROAD RIGHT-OF-WAY



CURVE LENGTH	RADIUS	DELTA
C1	42.39	28.00
C2	17.12	33.00
C3	14.84	29.00
C4	21.58	34.00
C5	10.47	20.00
C6	15.92	23.00
C7	11.52	23.00
C8	14.84	25.00
C9	11.87	23.00
C10	33.00	25.00
C11	11.52	23.00
C12	24.78	25.00
C13	11.48	25.00
C14	40.74	31.00
C15	22.35	28.00
C16	12.72	23.00
C17	29.32	28.00
C18	14.36	28.00
C19	11.28	23.00
C20	8.64	33.00
C21	18.76	64.30
C22	8.24	40.00
C23	11.33	23.00
C24	11.94	28.00
C25	27.33	23.00
C26	11.28	23.00
C27	15.70	25.00
C28	11.26	25.00
C29	31.71	25.00
C30	11.23	25.00
C31	28.20	25.00
C32	12.91	23.00
C33	11.53	25.00
C34	14.57	25.00
C35	14.70	25.00
C36	14.57	25.00
C37	14.57	25.00
C38	14.70	25.00
C39	14.57	25.00
C40	14.57	25.00
C41	14.57	25.00
C42	11.28	32.00
C43	3.54	33.00

SURVEYOR'S NOTES

- NO BUILDINGS OR ANY KIND OF CONSTRUCTION OR TREES OR
- NO BOUNDARIES SHALL BE PLACED IN ANY EASEMENT WITHOUT PRIOR
- WRITTEN APPROVAL OF ALL EASEMENT BENEFICIARIES AND ALL
- APPLICABLE CITY ORDINANCES AND ALL APPLICABLE STATE LAWS.
- ALL EASEMENTS SHALL BE SUBJECT TO THE CITY ORDINANCES FOR
- SUCH ENCROACHMENTS.
- BOUNDARIES SHOWN HEREON ARE BASED ON THE EAST LINE OF
- SECTION 5, TOWNSHIP 47 SOUTH, RANGE 43 EAST, HAVING A
- BEARING OF N 01°02'04" W.
- BUILDING OFFSET LINES SHALL BE AS REQUIRED BY CURRENT
- CITY OF BOCA RATON ZONING REGULATIONS.
- IN THOSE CASES WHERE EASEMENTS OF DIFFERENT TYPES
- CROSS OR OTHERWISE COINCIDE, UTILITY EASEMENTS SHALL
- HAVE FIRST PRIORITY, DRAINAGE EASEMENTS SHALL HAVE
- SECOND PRIORITY, ACCESS EASEMENTS SHALL HAVE THIRD
- PRIORITY, AND ALL OTHER EASEMENTS SHALL BE SUBORDINATE
- TO THESE WITH THEIR RESPECTIVE PRIORITY RIGHTS GRANTED.
- BOUNDARIES SHOWN HEREON ARE U.S. SURVEY FOOT.
- NOTICE: THIS PLAT, AS RECORDED IN ITS GRAPHIC FORM, IS
- THE OFFICIAL DETECTION OF THE SUBDIVIDED LANDS DESCRIBED
- HEREIN AND SHALL IN NO CIRCUMSTANCES BE SUPERSEDED BY
- AUTHORITY BY ANY OTHER GRAPHIC OR DIGITAL FORM OF THE
- PLAT. THERE MAY BE ADDITIONAL RESTRICTIONS THAT ARE NOT
- RECORDED ON THIS PLAT THAT MAY BE FOUND IN THE PUBLIC
- RECORDS OF PALM BEACH COUNTY, FLORIDA.
10. LOT CENTER SET PERMANENT REFERENCE MARKING (P.R.M.)
11. LOT CENTER SET PERMANENT CONTROL POINT (P.C.T.) NO.
- 5239
12. POINT
13. POINT
14. POINT
15. POINT
16. POINT
17. POINT
18. POINT
19. POINT
20. POINT
21. POINT
22. POINT
23. POINT
24. POINT
25. POINT
26. POINT
27. POINT
28. POINT
29. POINT
30. POINT
31. POINT
32. POINT
33. POINT
34. POINT
35. POINT
36. POINT
37. POINT
38. POINT
39. POINT
40. POINT
41. POINT
42. POINT
43. POINT
44. POINT
45. POINT
46. POINT
47. POINT
48. POINT
49. POINT
50. POINT
51. POINT
52. POINT
53. POINT
54. POINT
55. POINT
56. POINT
57. POINT
58. POINT
59. POINT
60. POINT
61. POINT
62. POINT
63. POINT
64. POINT
65. POINT
66. POINT
67. POINT
68. POINT
69. POINT
70. POINT
71. POINT
72. POINT
73. POINT
74. POINT
75. POINT
76. POINT
77. POINT
78. POINT
79. POINT
80. POINT
81. POINT
82. POINT
83. POINT
84. POINT
85. POINT
86. POINT
87. POINT
88. POINT
89. POINT
90. POINT
91. POINT
92. POINT
93. POINT
94. POINT
95. POINT
96. POINT
97. POINT
98. POINT
99. POINT
100. POINT